

## **Chapter 24 Internet Solution for LED screen**

-----compatible with 4G/3G/GPRS/WIFI communication

Internet solution introduction

Internet solution contains 4 parts :Customer side Software—LEDeditorv9, data server, LEDdata server center.exe and led controller. Customer could manage multiple led screens to display multi-media advertisements with this solution.

There are two types of Internet: one is through wire-----ADSL or LAN; another is wireless---WIFI/3G/4G. Whatever type of communication chose, all belong to Internet.

### **Hardware:**

1. Xixun control card
2. Internet -----wire or wireless way

### **Software:**

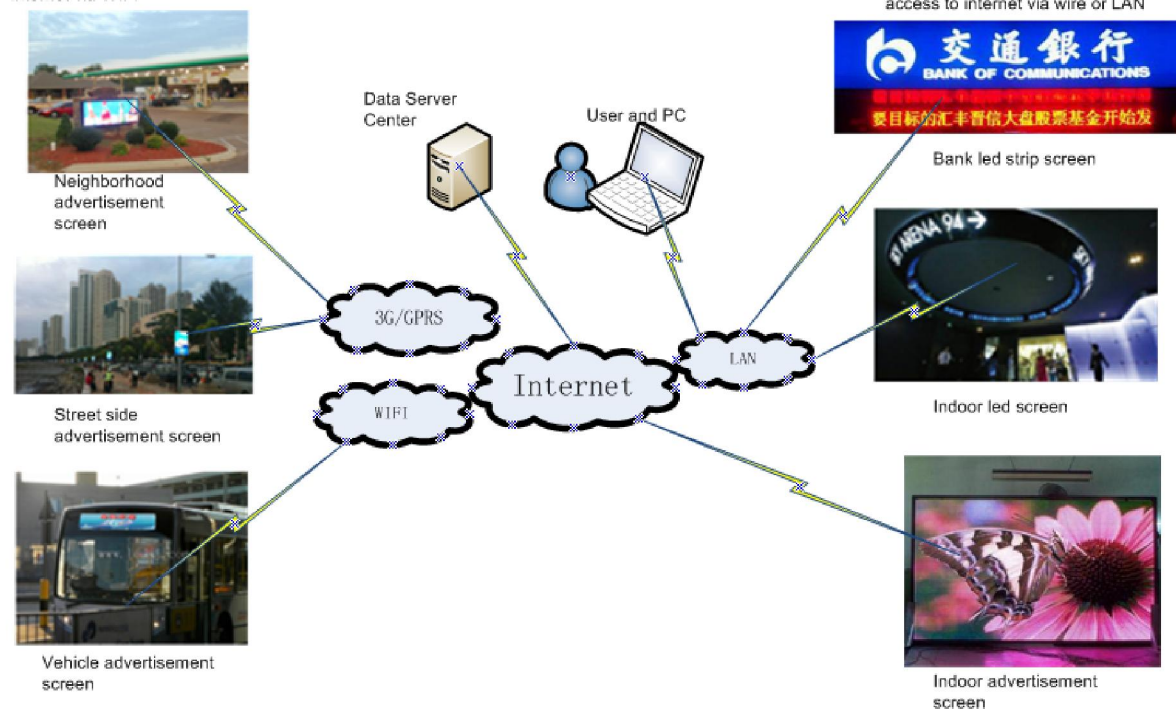
1. LED Editor software
2. LEDSet2.0 software
3. User name: this is xixun's work; we will apply a user name for each customer  
Default password is 888.

### **Precondition:**

Make sure that the place installing the LED screen has internet covered.

### **Connection diagram of internet and control card:**

Outdoor led screen: access to internet via 3G/GPRS  
Semi-outdoor/indoor led screen: access to internet via WIFI

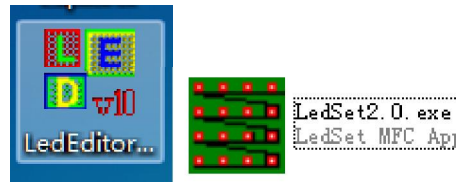


Please choose the proper communication type:

Communication type	Proper application	Led controller	Part	NOTE
Internet	Semi-outdoor/indoor	M-series controller	No	Adopt existing internet cable
WIFI	Semi-outdoor/indoor	M-series controller	WIFI modem WIFI access point --owned	No distance to control, but distance limit between led screen and WIFI access point
3G/ GPRS	outdoor	A-series controller	No	3G operator
4G/3G/ GPRS	outdoor	M-series controller	4G/3G router--owned	3G operator
LAN	Semi-outdoor/indoor	M-series controller	No	across network segment, internet control

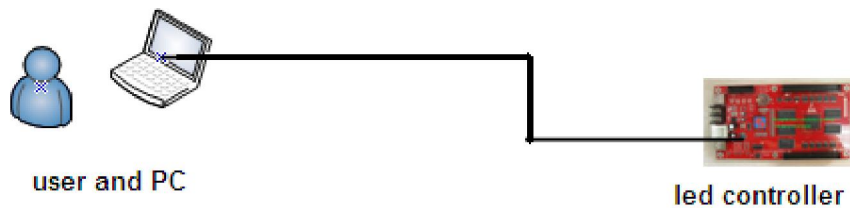
## Steps of setup:

Step 1; please install LEDeditorV10 software and LEDset2.0 software in computer.

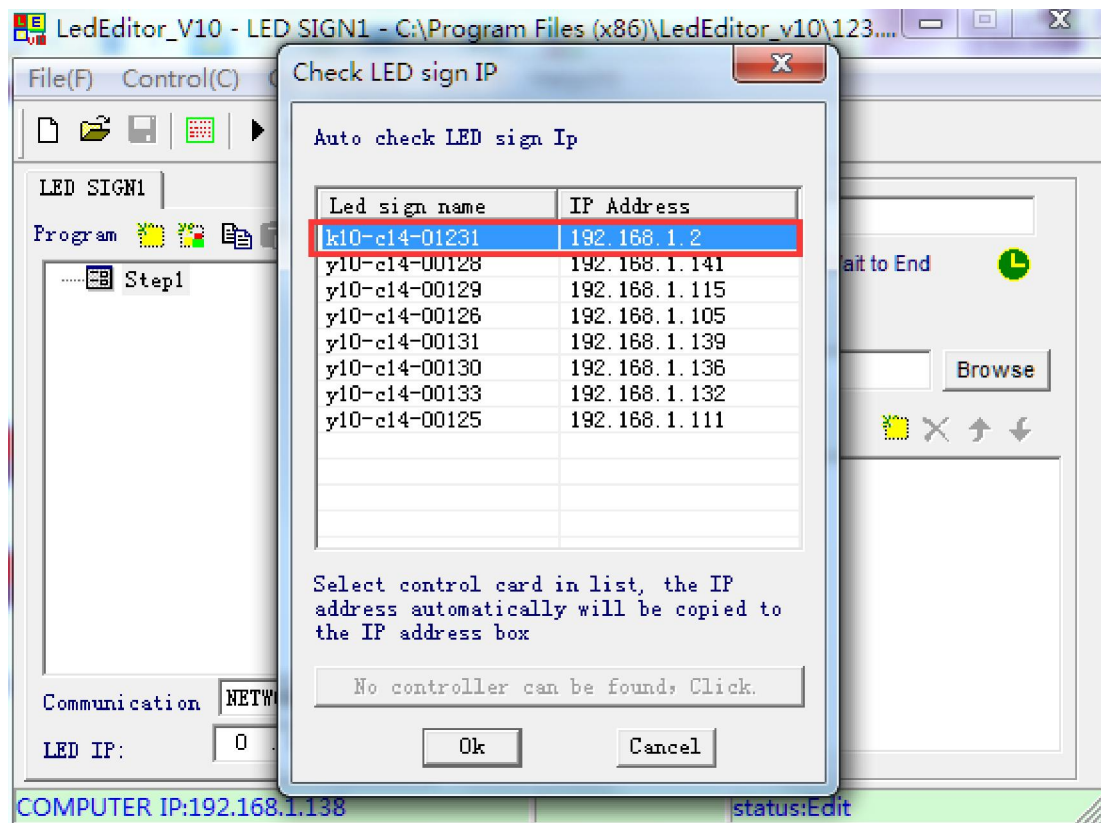


Step2, setup led controller

First of all, please connect a PC with control card through RJ45 network cable directly.  
Please see connection diagram in below:



Step3, turn on power for control card and then open LEDeditorV10 software on PC,  
Click on Helpà Auto check LED sign IP address and then click on OK.



Step4, then click on Optionsà Hardware setup in LEDeditorV10 software.

First, make sure controller IP address and default gateway in the same network segment and then press Send.

Second, choose Link Server, here, no need to change anything, domain name and port parameters are default parameters, just need press Send button.

Third, need write down Master Name and press Send button.

Hardware setup

SCREEN ID:k10-cl4-01231

Refresh

☐ Automatically obtain an IP address  
☒ Use the following IP address  
 IP address: 192.168.1.2 Send  
 Subnet mask: 255.255.255.0  
 Default: 192.168.1.1

☐ Serial port parameter  
 Serial: COM\_RS232 Send  
 Baudrate: 57600

same network segment

☒ Link Server  
☒ Server Domain: www.ledm2m.net Domain backup:   
☐ Server IP:  Custom Name: k10-cl4-01231 Send  
 Service port: 50001 status: no

☒ Data center  
 Master: test Send  
 3G status

☒ ID config(485 serial or RF) 31 (1~239) Send FTP Configuration

ID[1-65535]: 1

☐ Other process Close

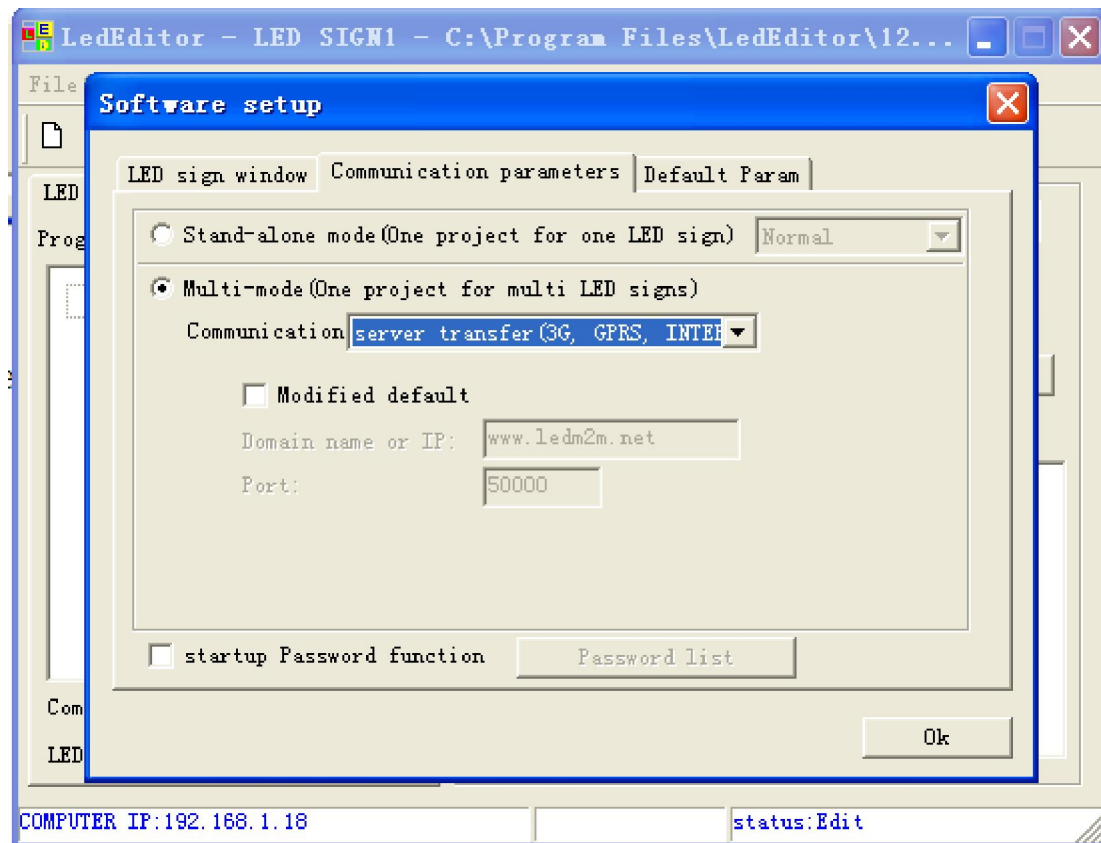
Step5, back to interface;

Click on Options→ software setup→ communication parameters→

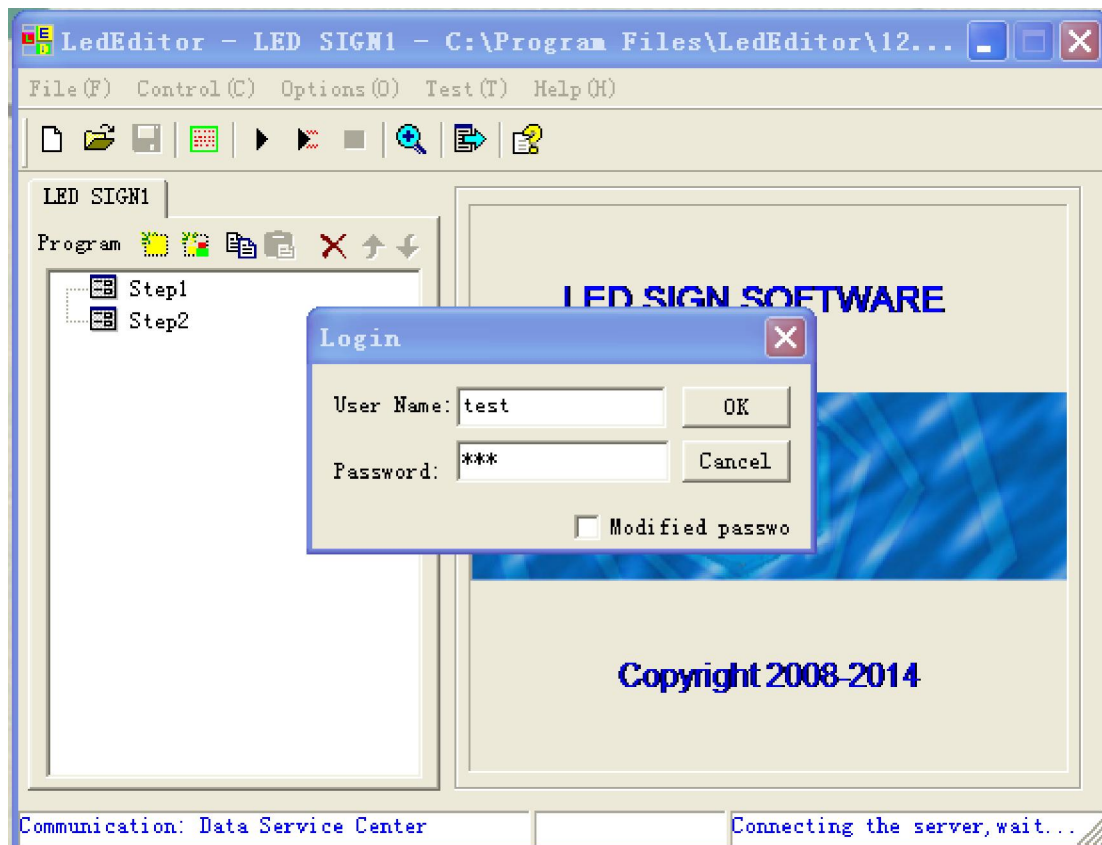
Multi-mode→ server transfer

No need to change server domain name and port, it is default.

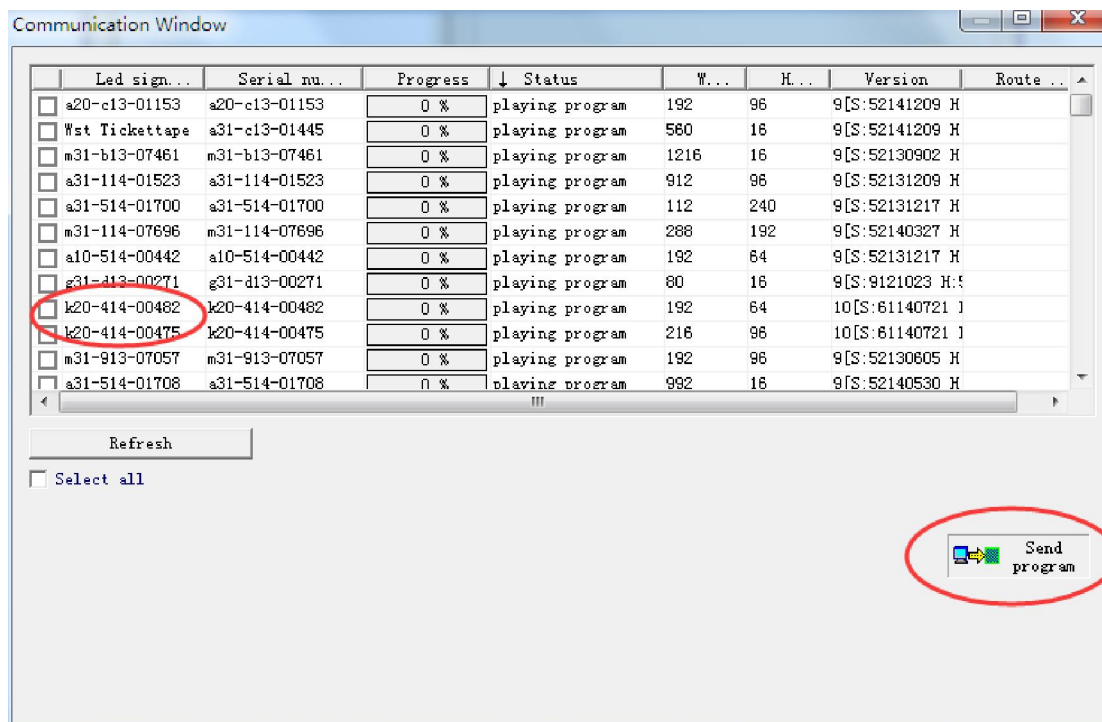
Press OK.



Step6, please back to interface and click on Send program button, needs to login user name and password.



Step7, please choose your card and then send program to it.



**About LED data server center:**

1. Customer use Xixun Company's server no need build their own.
2. Customer builds own server---please refer to: How to build own Server document or contact Xixun company's technicians.